

# KAT Quicknote™

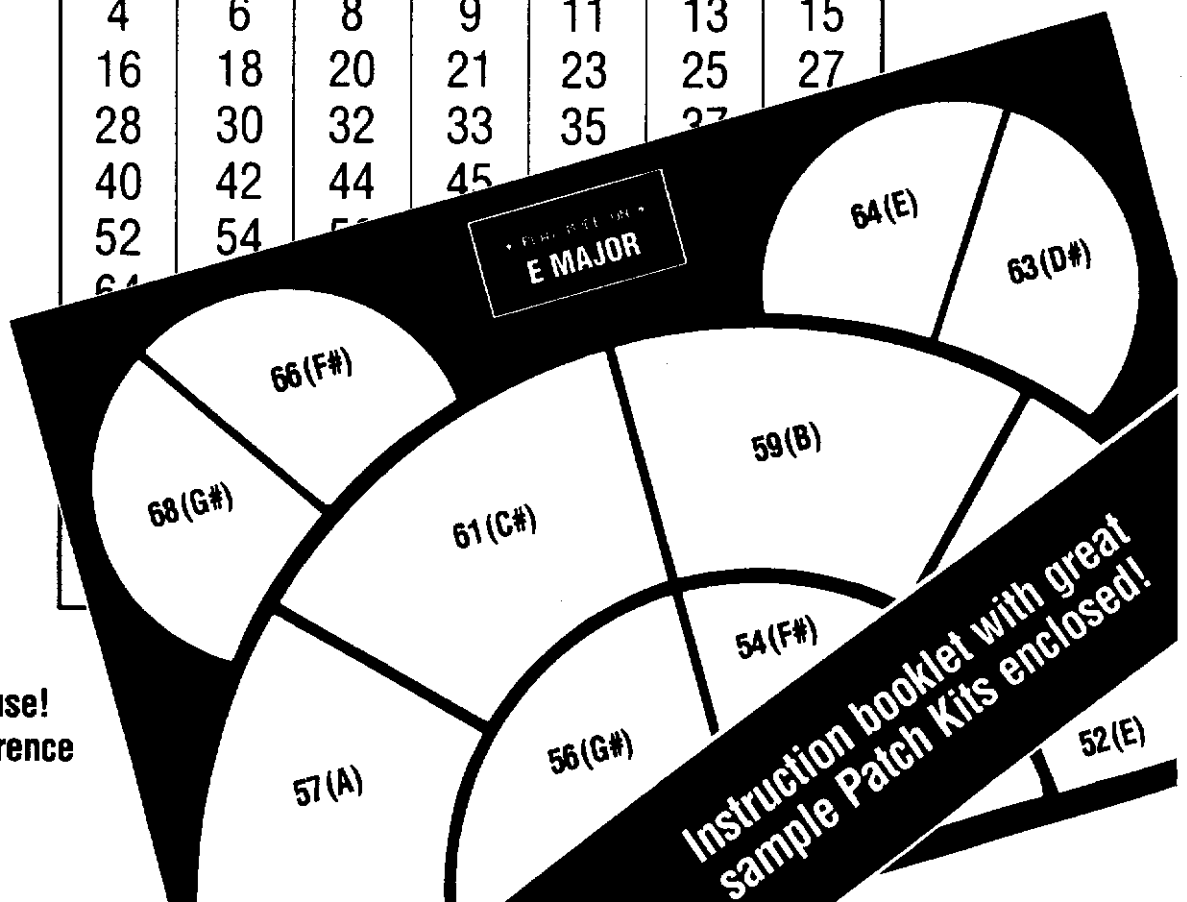
## MIDI Note Number Reference Charts

Program chord and melody patches quickly  
on all pad controllers.

Includes the most commonly used modes:  
Ionian Major, Dorian Minor, Aeolian Minor  
& Mixolydian Dominant

### E MAJOR

1	2	3	4	5	6	7
<b>E</b>	<b>F#</b>	<b>G#</b>	<b>A</b>	<b>B</b>	<b>C#</b>	<b>D#</b>
4	6	8	9	11	13	15
16	18	20	21	23	25	27
28	30	32	33	35	37	39
40	42	44	45	47	49	51
52	54	56	57	59	61	63
64	66	68	69	71	73	75



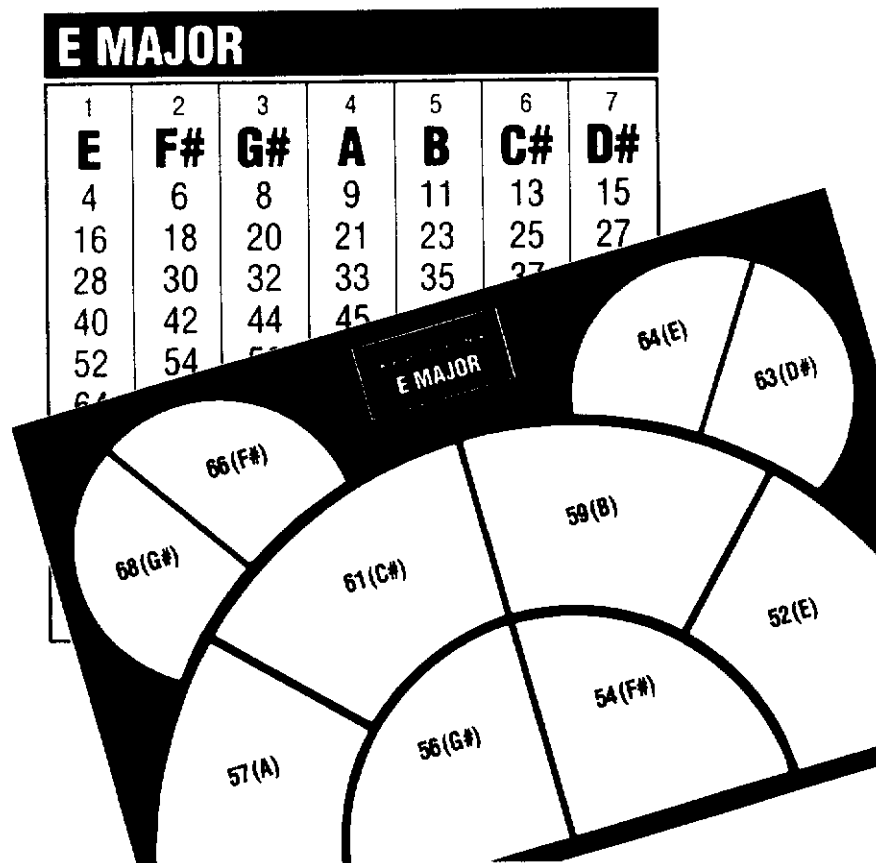
Easy to use!  
Great reference  
tool!

Instruction booklet with great  
sample Patch Kits enclosed!

# KAT Quicknote™

## MIDI Note Number Reference Charts

### Instruction Booklet



## Introduction

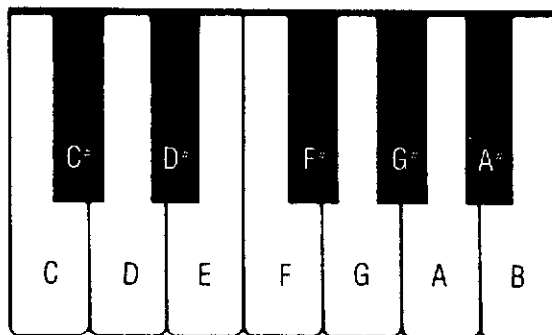
Congratulations on your purchase of the KAT Quicknote! The Quicknote is not intended to be a music course, rather it is a powerful tool. Modes, scales and the correct notes within those scales are all readily available. The Quicknote charts clearly display the MIDI note number equivalent for each note in all of the octaves within the MIDI spec (0-127). The cards themselves are laminated for years of faithful use.

Chords, bass and lead melody lines are easily played and programmed on MIDI controllers such as the Drumkat and the Midikiti Pro. The multiple note stacking capabilities of the Kat controllers offer powerful musical possibilities (refer to the Sample Patch Kits). Keyboard synths and tone modules are recommended for access to the greatest variety of keyboard timbres and sounds.

Presented here in the two cards are the four most important and widely used modes in modern pop music. These are the Ionian Major, Aeolian Minor, Dorian Minor and Mixolydian. For more detailed information on music theory, your local music store should be able to recommend some appropriate books.

## The Basics

Western music is based on a 12 tone system (the octave). This system is the fundamental basis of modern pop, rock, jazz, blues and folk music.



Enharmonics are single notes which have two identities. C# and D<sup>b</sup> are the same note. The identity a note takes depends on the mode you are playing in. Minor modes tend to use flats (refer to Aeolian & Dorian).

C	C#	D	D#	E	F	F#	G	G#	A	A#	B
	(B <sup>b</sup> )		(E <sup>b</sup> )			(G <sup>b</sup> )		(A <sup>b</sup> )		(B <sup>b</sup> )	

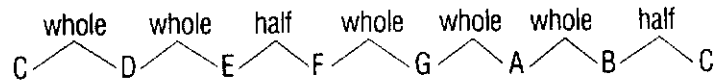
(Enharmonics)

Within these 12 tones there are 7-note patterns referred to as Modes. Exceptions are the Blues Mode, which has 6-note patterns and the Pentatonics which have 5.

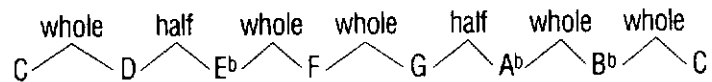
Ionian Major Mode	Pentatonic Minor Mode	Locrian Mode
Pentatonic Major Mode	Mixolydian Mode	Melodic Minor Mode
Dorian Minor Mode	Lydian Mode	Harmonic Minor Mode
Aeolian Minor Mode	Phrygian Mode	Blues Mode

The following is the respective whole step/half step pattern for the four most popular and commonly used modes:

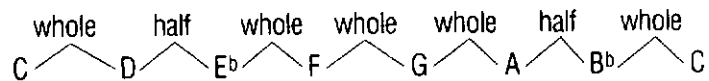
**Ionian Major Mode**



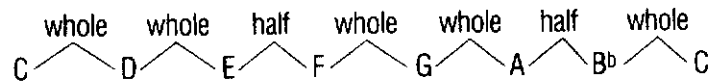
**Aeolian Minor Mode**



**Dorian Minor Mode**



**Mixolydian Mode**



Applying these formulas to each of the 12 notes is what gives us the different scales of that mode.

## How to Use the Kat Quicknote™

Shown below are the fundamental instructions for the Kat Quicknote card set.

1. This indicates the key signature and mode that you are in.
2. The numbers 1-7 indicate the position that each note possesses within that scale.  
In C Major the 1st or 1 is C. The 5th or 5 is G.
3. Just below the numbers 1-7 are the actual notes themselves within that scale.  
(1=C, 2=D, 3=E, etc.)
4. Each horizontal row of numbers (i.e. 36, 38, 40, 41, 43, 45, 47) represents an octave.

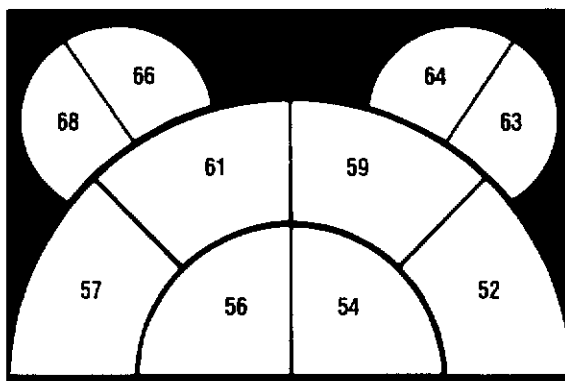
1 ———		<b>C MAJOR</b>						
2 ———	3 ———	1	2	3	4	5	6	7
		<b>C</b>	<b>D</b>	<b>E</b>	<b>F</b>	<b>G</b>	<b>A</b>	<b>B</b>
		0	2	4	5	7	9	11
		12	14	16	17	19	21	23
		24	26	28	29	31	33	35
		36	38	40	41	43	45	47
		48	50	52	53	55	57	59
4 ———	}	60	62	64	65	67	69	71
		72	74	76	77	79	81	83
		84	86	88	89	91	93	95
		96	98	100	101	103	105	107
		108	110	112	113	115	117	119
		120	122	124	125	127		

## Sample Patch Kits

Shown below are some example patch kits for you to try. Use the Quicknote to select different notes or change keys. NOTE: A MIDI keyboard or tone module will give you the greatest access to sounds. Experiment with different gate times on your Kat controller. This can greatly change the expression of the sound.

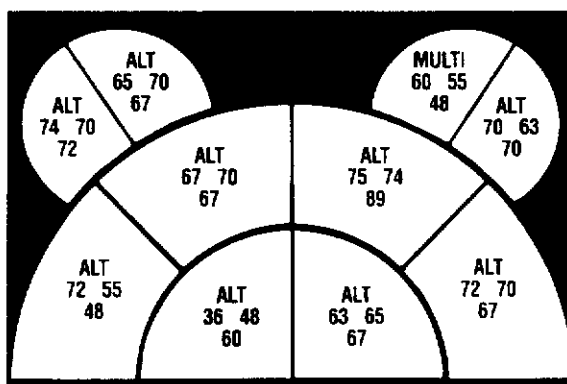
### E MAJOR

This is a basic patch. All pads are in the simple mode, playing only one sound. Experiment with changing a pad or two to the ALTERNATE or MULTI mode with appropriate notes assigned.



### C MINOR DORIAN

This is one you'll have some fun with. All pads but one are in the ALTERNATE mode. Pad nine is in the MULTI mode. Set the delay times for the notes on pad nine as follows: 60=off, 55=150 and 48=300. After you've played this patch, experiment with different delays.



# KAT Quicknote™

## MIDI Note Number Reference Chart

### Major Mode (Ionian)

C MAJOR						
1	2	3	4	5	6	7
C	D	E	F	G	A	B
0	2	4	5	7	9	11
12	14	16	17	19	21	23
24	26	28	29	31	33	35
36	38	40	41	43	45	47
48	50	52	53	55	57	59
60	62	64	65	67	69	71
72	74	76	77	79	81	83
84	86	88	89	91	93	95
96	98	100	101	103	105	107
108	110	112	113	115	117	119
120	122	124	125	127		

C <sup>♯</sup> D <sup>♭</sup> MAJOR						
1	2	3	4	5	6	7
C <sup>♯</sup> /D <sup>♭</sup>	D <sup>♯</sup> /E <sup>♭</sup>	E <sup>♯</sup> /F	F <sup>♯</sup> /G <sup>♭</sup>	G <sup>♯</sup> /A <sup>♭</sup>	A <sup>♯</sup> /B <sup>♭</sup>	B <sup>♯</sup> /C
1	3	5	6	8	10	12
13	15	17	18	20	22	24
25	27	29	30	32	34	36
37	39	41	42	44	46	48
49	51	53	54	56	58	60
61	63	65	66	68	70	72
73	75	77	78	80	82	84
85	87	89	90	92	94	96
97	99	101	102	104	106	108
109	111	113	114	116	118	120
121	123	125	126			

D MAJOR						
1	2	3	4	5	6	7
D	E	F <sup>♯</sup>	G	A	B	C <sup>♯</sup>
2	4	6	7	9	11	13
14	16	18	19	21	23	25
26	28	30	31	33	35	37
38	40	42	43	45	47	49
50	52	54	55	57	59	61
62	64	66	67	69	71	73
74	76	78	79	81	83	85
86	88	90	91	93	95	97
98	100	102	103	105	107	109
110	112	114	115	117	119	121
122	124	126	127			

E <sup>♭</sup> MAJOR						
1	2	3	4	5	6	7
E <sup>♭</sup>	F	G	A <sup>♭</sup>	B <sup>♭</sup>	C	D
3	5	7	8	10	12	14
15	17	19	20	22	24	26
27	29	31	32	34	36	38
39	41	43	44	46	48	50
51	53	55	56	58	60	62
63	65	67	68	70	72	74
75	77	79	80	82	84	86
87	89	91	92	94	96	98
99	101	103	104	106	108	110
111	113	115	116	118	120	122
123	125	127				

E MAJOR						
1	2	3	4	5	6	7
E	F <sup>♯</sup>	G <sup>♯</sup>	A	B	C <sup>♯</sup>	D <sup>♯</sup>
4	6	8	9	11	13	15
16	18	20	21	23	25	27
28	30	32	33	35	37	39
40	42	44	45	47	49	51
52	54	56	57	59	61	63
64	66	68	69	71	73	75
76	78	80	81	83	85	87
88	90	92	93	95	97	99
100	102	104	105	107	109	111
112	114	116	117	119	121	123
124	126					

F MAJOR						
1	2	3	4	5	6	7
F	G	A	B <sup>♭</sup>	C	D	E
5	7	9	10	12	14	16
17	19	21	22	24	26	28
29	31	33	34	36	38	40
41	43	45	46	48	50	52
53	55	57	58	60	62	64
66	67	69	70	72	74	76
77	79	81	82	84	86	88
89	91	93	94	96	98	100
101	103	105	106	108	110	112
113	115	117	118	120	122	124
125	127					

F <sup>♯</sup> G MAJOR						
1	2	3	4	5	6	7
F <sup>♯</sup> /G <sup>♭</sup>	G <sup>♯</sup> /A <sup>♭</sup>	A <sup>♯</sup> /B <sup>♭</sup>	B <sup>♯</sup> /C <sup>♭</sup>	C <sup>♯</sup> /D <sup>♭</sup>	D <sup>♯</sup> /E <sup>♭</sup>	E <sup>♯</sup> /F
6	8	10	11	13	15	17
18	20	22	23	25	27	29
30	32	34	35	37	39	41
42	44	46	47	49	51	53
54	56	58	59	61	63	65
66	68	70	71	73	75	77
78	80	82	83	85	87	89
90	92	94	95	97	99	101
102	104	106	107	109	111	113
114	116	118	119	121	123	125
126						

G MAJOR						
1	2	3	4	5	6	7
G	A	B	C	D	E	F <sup>♯</sup>
7	9	11	12	14	16	18
19	21	23	24	26	28	30
31	33	35	36	38	40	42
43	45	47	48	50	52	54
55	57	59	60	62	64	66
67	69	71	72	74	76	78
79	81	83	84	86	88	90
91	93	95	96	98	100	102
103	105	107	108	110	112	114
115	117	119	120	122	124	126
127						

A <sup>♭</sup> MAJOR						
1	2	3	4	5	6	7
A <sup>♭</sup>	B <sup>♭</sup>	C	D <sup>♭</sup>	E <sup>♭</sup>	F	G
8	10	12	13	15	17	19
20	22	24	25	27	29	31
32	34	36	37	39	41	43
44	46	48	49	51	53	55
56	58	60	61	63	65	67
68	70	72	73	75	77	79
80	82	84	85	87	89	91
92	94	96	97	99	101	103
104	106	108	109	111	113	115
116	118	120	121	123	125	127

A MAJOR						
1	2	3	4	5	6	7
A	B	C <sup>♯</sup>	D	E	F <sup>♯</sup>	G <sup>♯</sup>
9	11	13	14	16	18	20
21	23	25	26	28	30	32
33	35	37	38	40	42	44
45	47	49	50	52	54	56
57	59	61	62	64	66	68
69	71	73	74	76	78	80
81	83	85	86	88	90	92
93	95	97	98	100	102	104
105	107	109	110	112	114	116
117	119	121	122	124	126	

B <sup>♭</sup> MAJOR						
1	2	3	4	5	6	7
B <sup>♭</sup>	C	D	E <sup>♭</sup>	F	G	A
10	12	14	15	17	19	21
22	24	26	27	29	31	33
34	36	38	39	41	43	45
46	48	50	51	53	55	57
58	60	62	63	65	67	69
70	72	74	75	77	79	81
82	84	86	87	89	91	93
94	96	98	99	101	103	105
106	108	110	111	113	115	117
118	120	122	123	125	127	

B <sup>♯</sup> C MAJOR						
1	2	3	4	5	6	7
B <sup>♯</sup> /C <sup>♭</sup>	C <sup>♯</sup> /D <sup>♭</sup>	D <sup>♯</sup> /E <sup>♭</sup>	E <sup>♯</sup> /F <sup>♭</sup>	F <sup>♯</sup> /G <sup>♭</sup>	G <sup>♯</sup> /A <sup>♭</sup>	A <sup>♯</sup> /B <sup>♭</sup>
11	13	15	16	18	20	22
23	25	27	28	30	32	34
35	37	39	40	42	44	46
47	49	51	52	54	56	58
59	61	63	64	66	68	70
71	73	75	76	78	80	82
83	85	87	88	90	92	94
95	97	99	100	102	104	106
107	109	111	112	114	116	118
119	121	123	124	126		

# KAT Quicknote™ MIDI Note Number Reference Chart

## Mixolydian Mode

C MIXOLYDIAN						
1	2	3	4	5	6	7
C	D	E	F	G	A	B <sup>b</sup>
0	2	4	5	7	9	10
12	14	16	17	19	21	22
24	26	28	29	31	33	34
36	38	40	41	43	45	46
48	50	52	53	55	57	58
60	62	64	65	67	69	70
72	74	76	77	79	81	82
84	86	88	89	91	93	94
96	98	100	101	103	105	106
108	110	112	113	115	117	118
120	122	124	125	127		

C <sup>b</sup> D MIXOLYDIAN						
1	2	3	4	5	6	7
C <sup>b</sup> /D <sup>b</sup>	D <sup>b</sup> /E <sup>b</sup>	E <sup>b</sup> /F	F <sup>b</sup> /G <sup>b</sup>	G <sup>b</sup> /A <sup>b</sup>	A <sup>b</sup> /B <sup>b</sup>	B <sup>b</sup> /C <sup>b</sup>
1	3	5	6	8	10	11
13	15	17	18	20	22	23
25	27	29	30	32	34	35
37	39	41	42	44	46	47
49	51	53	54	56	58	59
61	63	65	66	68	70	71
73	75	77	78	80	82	83
85	87	89	90	92	94	95
97	99	101	102	104	106	107
109	111	113	114	116	118	119
121	123	125	126			

D MIXOLYDIAN						
1	2	3	4	5	6	7
D	E	F <sup>#</sup>	G	A	B	C
2	4	6	7	9	11	12
14	16	18	19	21	23	24
26	28	30	31	33	35	36
38	40	42	43	45	47	48
50	52	54	55	57	59	60
62	64	66	67	69	71	72
74	76	78	79	81	83	84
86	88	90	91	93	95	96
98	100	102	103	105	107	108
110	112	114	115	117	119	120
122	124	126	127			

E <sup>b</sup> MIXOLYDIAN						
1	2	3	4	5	6	7
E <sup>b</sup>	F	G	A <sup>b</sup>	B <sup>b</sup>	C	D <sup>b</sup>
3	5	7	8	10	12	13
15	17	19	20	22	24	25
27	29	31	32	34	36	37
39	41	43	44	46	48	49
51	53	55	56	58	60	61
63	65	67	68	70	72	73
75	77	79	80	82	84	85
87	89	91	92	94	96	97
99	101	103	104	106	108	109
111	113	115	116	118	120	121
123	125	127				

E MIXOLYDIAN						
1	2	3	4	5	6	7
E	F <sup>#</sup>	G <sup>#</sup>	A	B	C <sup>#</sup>	D
4	6	8	9	11	13	14
16	18	20	21	23	25	26
28	30	32	33	35	37	38
40	42	44	45	47	49	50
52	54	56	57	59	61	62
64	66	68	69	71	73	74
76	78	80	81	83	85	86
88	90	92	93	95	97	98
100	102	104	105	107	109	110
112	114	116	117	119	121	122
124	126					

F MIXOLYDIAN						
1	2	3	4	5	6	7
F	G	A	B <sup>b</sup>	C	D	E <sup>b</sup>
5	7	9	10	12	14	15
17	19	21	22	24	26	27
29	31	33	34	36	38	39
41	43	45	46	48	50	51
53	55	57	58	60	62	63
66	67	69	70	72	74	75
77	79	81	82	84	86	87
89	91	93	94	96	98	99
101	103	105	106	108	110	111
113	115	117	118	120	122	123
125	127					

F <sup>b</sup> G MIXOLYDIAN						
1	2	3	4	5	6	7
F <sup>b</sup> /G <sup>b</sup>	G <sup>b</sup> /A <sup>b</sup>	A <sup>b</sup> /B <sup>b</sup>	B <sup>b</sup> /C <sup>b</sup>	C <sup>b</sup> /D <sup>b</sup>	D <sup>b</sup> /E <sup>b</sup>	E <sup>b</sup> /F <sup>b</sup>
6	8	10	11	13	15	16
18	20	22	23	25	27	28
30	32	34	35	37	39	40
42	44	46	47	49	51	52
54	56	58	59	61	63	64
66	68	70	71	73	75	76
78	80	82	83	85	87	88
90	92	94	95	97	99	100
102	104	106	107	109	111	112
114	116	118	119	121	123	124
126						

G MIXOLYDIAN						
1	2	3	4	5	6	7
G	A	B	C	D	E	F
7	9	11	12	14	16	17
19	21	23	24	26	28	29
31	33	35	36	38	40	41
43	45	47	48	50	52	53
55	57	59	60	62	64	65
67	69	71	72	74	76	77
79	81	83	84	86	88	89
91	93	95	96	98	100	101
103	105	107	108	110	112	113
115	117	119	120	122	124	125
127						

G <sup>b</sup> A MIXOLYDIAN						
1	2	3	4	5	6	7
G <sup>b</sup> /A <sup>b</sup>	A <sup>b</sup> /B <sup>b</sup>	B <sup>b</sup> /C <sup>b</sup>	C <sup>b</sup> /D <sup>b</sup>	D <sup>b</sup> /E <sup>b</sup>	E <sup>b</sup> /F <sup>b</sup>	F <sup>b</sup> /G <sup>b</sup>
8	10	12	13	15	17	18
20	22	24	25	27	29	30
32	34	36	37	39	41	42
44	46	48	49	51	53	54
56	58	60	61	63	65	66
68	70	72	73	75	77	78
80	82	84	85	87	89	90
92	94	96	97	99	101	102
104	106	108	109	111	113	114
116	118	120	121	123	125	126

A MIXOLYDIAN						
1	2	3	4	5	6	7
A	B	C <sup>#</sup>	D	E	F <sup>#</sup>	G
9	11	13	14	16	18	19
21	23	25	26	28	30	31
33	35	37	38	40	42	43
45	47	49	50	52	54	55
57	59	61	62	64	66	67
69	71	73	74	76	78	79
81	83	85	86	88	90	91
93	95	97	98	100	102	103
105	107	109	110	112	114	115
117	119	121	122	124	126	127

B <sup>b</sup> MIXOLYDIAN						
1	2	3	4	5	6	7
B <sup>b</sup>	C	D	E <sup>b</sup>	F	G	A <sup>b</sup>
10	12	14	15	17	19	20
22	24	26	27	29	31	32
34	36	38	39	41	43	44
46	48	50	51	53	55	56
58	60	62	63	65	67	68
70	72	74	75	77	79	80
82	84	86	87	89	91	92
94	96	98	99	101	103	104
106	108	110	111	113	115	116
118	120	122	123	125	127	

B MIXOLYDIAN						
1	2	3	4	5	6	7
B	C <sup>#</sup>	D <sup>#</sup>	E	F <sup>#</sup>	G <sup>#</sup>	A
11	13	15	16	18	20	21
23	25	27	28	30	32	33
35	37	39	40	42	44	45
47	49	51	52	54	56	57
59	61	63	64	66	68	69
71	73	75	76	78	80	81
83	85	87	88	90	92	93
95	97	99	100	102	104	105
107	109	111	112	114	116	117
119	121	123	124	126		



# KAT Quicknote™

## MIDI Note Number Reference Chart

# Minor Mode (Dorian)

C MINOR (DORIAN)						
1	2	3	4	5	6	7
C	D	E <sup>b</sup>	F	G	A	B <sup>b</sup>
0	2	3	5	7	9	10
12	14	15	17	19	21	22
24	26	27	29	31	33	34
36	38	39	41	43	45	46
48	50	51	53	55	57	58
60	62	63	65	67	69	70
72	74	75	77	79	81	82
84	86	87	89	91	93	94
96	98	99	101	103	105	106
108	110	111	113	115	117	118
120	122	123	125	127		

C <sup>o</sup> D MINOR (DORIAN)						
1	2	3	4	5	6	7
C <sup>o</sup> /D <sup>b</sup>	D <sup>b</sup> /E <sup>b</sup>	E <sup>b</sup> /F <sup>b</sup>	F <sup>b</sup> /G <sup>b</sup>	G <sup>b</sup> /A <sup>b</sup>	A <sup>b</sup> /B <sup>b</sup>	B <sup>b</sup> /C <sup>b</sup>
1	3	4	6	8	10	11
13	15	16	18	20	22	23
25	27	28	30	32	34	35
37	39	40	42	44	46	47
49	51	52	54	56	58	59
61	63	64	66	68	70	71
73	75	76	78	80	82	83
85	87	88	90	92	94	95
97	99	100	102	104	106	107
109	111	112	114	116	118	119
121	123	124	126			

D MINOR (DORIAN)						
1	2	3	4	5	6	7
D	E	F	G	A	B	C
2	4	5	7	9	11	12
14	16	17	19	21	23	24
26	28	29	31	33	35	36
38	40	41	43	45	47	48
50	52	53	55	57	59	60
62	64	65	67	69	71	72
74	76	77	79	81	83	84
86	88	89	91	93	95	96
98	100	101	103	105	107	108
110	112	113	115	117	119	120
122	124	125	127			

D <sup>b</sup> E MINOR (DORIAN)						
1	2	3	4	5	6	7
D <sup>b</sup> /E <sup>b</sup>	E <sup>b</sup> /F	F/G <sup>b</sup>	G <sup>b</sup> /A <sup>b</sup>	A <sup>b</sup> /B <sup>b</sup>	B <sup>b</sup> /C	C/D <sup>b</sup>
3	5	6	8	10	12	13
15	17	18	20	22	24	25
27	29	30	32	34	36	37
39	41	42	44	46	48	49
51	53	54	56	58	60	61
63	65	66	68	70	72	73
75	77	78	80	82	84	85
87	89	90	92	94	96	97
99	101	102	104	106	108	109
111	113	114	116	118	120	121
123	125	126				

E MINOR (DORIAN)						
1	2	3	4	5	6	7
E	F <sup>#</sup>	G	A	B	C <sup>#</sup>	D
4	6	7	9	11	13	14
16	18	19	21	23	25	26
28	30	31	33	35	37	38
40	42	43	45	47	49	50
52	54	55	57	59	61	62
64	66	67	69	71	73	74
76	78	79	81	83	85	86
88	90	91	93	95	97	98
100	102	103	105	107	109	110
112	114	115	117	119	121	122
124	126	127				

F MINOR (DORIAN)						
1	2	3	4	5	6	7
F	G	A <sup>b</sup>	B <sup>b</sup>	C	D	E <sup>b</sup>
5	7	8	10	12	14	15
17	19	20	22	24	26	27
29	31	32	34	36	38	39
41	43	44	46	48	50	51
53	55	56	58	60	62	63
65	67	68	70	72	74	75
77	79	80	82	84	86	87
89	91	92	94	96	98	99
101	103	104	106	108	110	111
113	115	116	118	120	122	123
125	127					

F <sup>#</sup> MINOR (DORIAN)						
1	2	3	4	5	6	7
F <sup>#</sup>	G <sup>#</sup>	A	B	C <sup>#</sup>	D <sup>#</sup>	E
6	8	9	11	13	15	16
18	20	21	23	25	27	28
30	32	33	35	37	39	40
42	44	45	47	49	51	52
54	56	57	59	61	63	64
66	68	69	71	73	75	76
78	80	81	83	85	87	88
90	92	93	95	97	99	100
102	104	105	107	109	111	112
114	116	117	119	121	123	124
126						

G MINOR (DORIAN)						
1	2	3	4	5	6	7
G	A	B <sup>b</sup>	C	D	E	F
7	9	10	12	14	16	17
19	21	22	24	26	28	29
31	33	34	36	38	40	41
43	45	46	48	50	52	53
55	57	58	60	62	64	65
67	69	70	72	74	76	77
79	81	82	84	86	88	89
91	93	94	96	98	100	101
103	105	106	108	110	112	113
115	117	118	120	122	124	125
127						

G <sup>o</sup> A MINOR (DORIAN)						
1	2	3	4	5	6	7
G <sup>o</sup> /A <sup>b</sup>	A <sup>b</sup> /B <sup>b</sup>	B <sup>b</sup> /C <sup>b</sup>	C <sup>b</sup> /D <sup>b</sup>	D <sup>b</sup> /E <sup>b</sup>	E <sup>b</sup> /F	F/G <sup>b</sup>
8	10	11	13	15	17	18
20	22	23	25	27	29	30
32	34	35	37	39	41	42
44	46	47	49	51	53	54
56	58	59	61	63	65	66
68	70	71	73	75	77	78
80	82	83	85	87	89	90
92	94	95	97	99	101	102
104	106	107	109	111	113	114
116	118	119	121	123	125	126

A MINOR (DORIAN)						
1	2	3	4	5	6	7
A	B	C	D	E	F <sup>#</sup>	G
9	11	12	14	16	18	19
21	23	24	26	28	30	31
33	35	36	38	40	42	43
45	47	48	50	52	54	55
57	59	60	62	64	66	67
69	71	72	74	76	78	79
81	83	84	86	88	90	91
93	95	96	98	100	102	103
105	107	108	110	112	114	115
117	119	120	122	124	126	127

B <sup>b</sup> MINOR (DORIAN)						
1	2	3	4	5	6	7
B <sup>b</sup>	C	D <sup>b</sup>	E <sup>b</sup>	F	G	A <sup>b</sup>
10	12	13	15	17	19	20
22	24	25	27	29	31	32
34	36	37	39	41	43	44
46	48	49	51	53	55	56
58	60	61	63	65	67	68
70	72	73	75	77	79	80
82	84	85	87	89	91	92
94	96	97	99	101	103	104
106	108	109	111	113	115	116
118	120	121	123	125	127	128

B MINOR (DORIAN)						
1	2	3	4	5	6	7
B	C <sup>#</sup>	D	E	F <sup>#</sup>	G <sup>#</sup>	A
11	13	14	16	18	20	21
23	25	26	28	30	32	33
35	37	38	40	42	44	45
47	49	50	52	54	56	57
59	61	62	64	66	68	69
71	73	74	76	78	80	81
83	85	86	88	90	92	93
95	97	98	100	102	104	105
107	109	110	112	114	116	117
119	121	122	124	126	128	

# KAT Quicknote™ MIDI Note Number Reference Chart

## Minor Mode (Aeolian)

### C MINOR (AEOLIAN)

1	2	3	4	5	6	7
C	D	E <sup>b</sup>	F	G	A <sup>b</sup>	B <sup>b</sup>
0	2	3	5	7	8	10
12	14	15	17	19	20	22
24	26	27	29	31	32	34
36	38	39	41	43	44	46
48	50	51	53	55	56	58
60	62	63	65	67	68	70
72	74	75	77	79	80	82
84	86	87	89	91	92	94
96	98	99	101	103	104	106
108	110	111	113	115	116	118
120	122	123	125	127		

### C# MINOR (AEOLIAN)

1	2	3	4	5	6	7
C#	D#	E	F#	G#	A	B
1	3	4	6	8	9	11
13	15	16	18	20	21	23
25	27	28	30	32	33	35
37	39	40	42	44	45	47
49	51	52	54	56	57	59
61	63	64	66	68	69	71
73	75	76	78	80	81	83
85	87	88	90	92	93	95
97	99	100	102	104	105	107
109	111	112	114	116	117	119
121	123	124	126			

### D MINOR (AEOLIAN)

1	2	3	4	5	6	7
D	E	F	G	A	B <sup>b</sup>	C
2	4	5	7	9	10	12
14	16	17	19	21	22	24
26	28	29	31	33	34	36
38	40	41	43	45	46	48
50	52	53	55	57	58	60
62	64	65	67	69	70	72
74	76	77	79	81	82	84
86	88	89	91	93	94	96
98	100	101	103	105	106	108
110	112	113	115	117	118	120
122	124	125	127			

### D<sup>b</sup> E MINOR (AEOLIAN)

1	2	3	4	5	6	7
D <sup>b</sup> /E <sup>b</sup>	E <sup>b</sup> /F	F <sup>b</sup> /G <sup>b</sup>	G <sup>b</sup> /A <sup>b</sup>	A <sup>b</sup> /B <sup>b</sup>	B <sup>b</sup> /C <sup>b</sup>	C <sup>b</sup> /D <sup>b</sup>
3	5	6	8	10	11	13
15	17	18	20	22	23	25
27	29	30	32	34	35	37
39	41	42	44	46	47	49
51	53	54	56	58	59	61
63	65	66	68	70	71	73
75	77	78	80	82	83	85
87	89	90	92	94	95	97
99	101	102	104	106	107	109
111	113	114	116	118	119	121
123	125	126				

### E MINOR (AEOLIAN)

1	2	3	4	5	6	7
E	F#	G	A	B	C	D
4	6	7	9	11	12	14
16	18	19	21	23	24	26
28	30	31	33	35	36	38
40	42	43	45	47	48	50
52	54	55	57	59	60	62
64	66	67	69	71	72	74
76	78	79	81	83	84	86
88	90	91	93	95	96	98
100	102	103	105	107	108	110
112	114	115	117	119	120	122
124	126	127				

### F MINOR (AEOLIAN)

1	2	3	4	5	6	7
F	G	A <sup>b</sup>	B <sup>b</sup>	C	D <sup>b</sup>	E <sup>b</sup>
5	7	8	10	12	13	15
17	19	20	22	24	25	27
29	31	32	34	36	37	39
41	43	44	46	48	49	51
53	55	56	58	60	61	63
65	67	68	70	72	73	75
77	79	80	82	84	85	87
89	91	92	94	96	97	99
101	103	104	106	108	109	111
113	115	116	118	120	121	123
125	127					

### F# MINOR (AEOLIAN)

1	2	3	4	5	6	7
F#	G#	A	B	C#	D	E
6	8	9	11	13	14	16
18	20	21	23	25	26	28
30	32	33	35	37	38	40
42	44	45	47	49	50	52
54	56	57	59	61	62	64
66	68	69	71	73	74	76
78	80	81	83	85	86	88
90	92	93	95	97	98	100
102	104	105	107	109	110	112
114	116	117	119	121	122	124
126						

### G MINOR (AEOLIAN)

1	2	3	4	5	6	7
G	A	B <sup>b</sup>	C	D	E <sup>b</sup>	F
7	9	10	12	14	15	17
19	21	22	24	26	27	29
31	33	34	36	38	39	41
43	45	46	48	50	51	53
55	57	58	60	62	63	65
67	69	70	72	74	75	77
79	81	82	84	86	87	89
91	93	94	96	98	99	101
103	105	106	108	110	111	113
115	117	118	120	122	123	125
127						

### G<sup>b</sup> A MINOR (AEOLIAN)

1	2	3	4	5	6	7
G <sup>b</sup> /A <sup>b</sup>	A <sup>b</sup> /B <sup>b</sup>	B <sup>b</sup> /C <sup>b</sup>	C <sup>b</sup> /D <sup>b</sup>	D <sup>b</sup> /E <sup>b</sup>	E <sup>b</sup> /F <sup>b</sup>	F <sup>b</sup> /G <sup>b</sup>
8	10	11	13	15	16	18
20	22	23	25	27	28	30
32	34	35	37	39	40	42
44	46	47	49	51	52	54
56	58	59	61	63	64	66
68	70	71	73	75	76	78
80	82	83	85	87	88	90
92	94	95	97	99	100	102
104	106	107	109	111	112	114
116	118	119	121	123	124	126

### A MINOR (AEOLIAN)

1	2	3	4	5	6	7
A	B	C	D	E	F	G
9	11	12	14	16	17	19
21	23	24	26	28	29	31
33	35	36	38	40	41	43
45	47	48	50	52	53	55
57	59	60	62	64	65	67
69	71	72	74	76	77	79
81	83	84	86	88	89	91
93	95	96	98	100	101	103
105	107	108	110	112	113	115
117	119	120	122	124	125	127

### A<sup>b</sup> B MINOR (AEOLIAN)

1	2	3	4	5	6	7
A <sup>b</sup> /B <sup>b</sup>	B <sup>b</sup> /C <sup>b</sup>	C <sup>b</sup> /D <sup>b</sup>	D <sup>b</sup> /E <sup>b</sup>	E <sup>b</sup> /F <sup>b</sup>	F <sup>b</sup> /G <sup>b</sup>	G <sup>b</sup> /A <sup>b</sup>
10	12	13	15	17	18	20
22	24	25	27	29	30	32
34	36	37	39	41	42	44
46	48	49	51	53	54	56
58	60	61	63	65	66	68
70	72	73	75	77	78	80
82	84	85	87	89	90	92
94	96	97	99	101	102	104
106	108	109	111	113	114	116
118	120	121	123	125	126	128

### B MINOR (AEOLIAN)

1	2	3	4	5	6	7
B	C#	D	E	F#	G	A
11	13	14	16	18	19	21
23	25	26	28	30	31	33
35	37	38	40	42	43	45
47	49	50	52	54	55	57
59	61	62	64	66	67	69
71	73	74	76	78	79	81
83	85	86	88	90	91	93
95	97	98	100	102	103	105
107	109	110	112	114	115	117
119	121	122	124	126	127	